

**SD** Sandra Davidson  
ESTATE AGENTS



Viking Gardens, London, E6 5YR  
£2,700 Per Calendar Month

 3  2  1  B



£2,700 Per Calendar Month

# Viking Gardens

London, E6 5YR

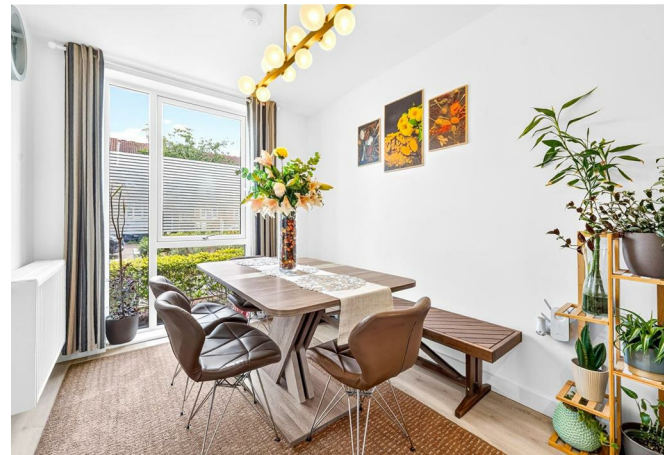
- Maisonette
- Two Bathrooms
- Communal Gym
- Three Bedrooms
- Terrace

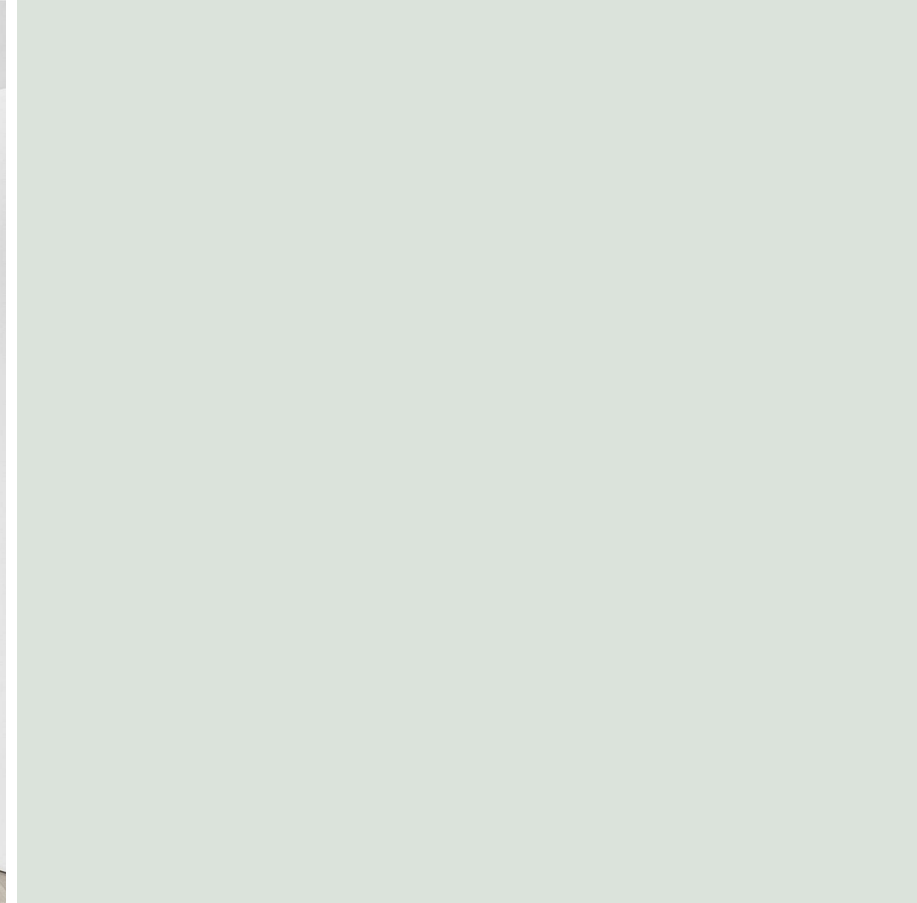
A bright and airy split level three bedroom, two bathroom maisonette in a modern development in the new Beckton Parkside, within a short walk to Beckton DLR.

The apartment features floor to ceiling windows, filling the rooms with natural light. There is a reception room that leads onto a terrace. three bedrooms, one en-suite, family bathroom and separate cloakroom, a modern kitchen/dining area complete with integrated appliances.

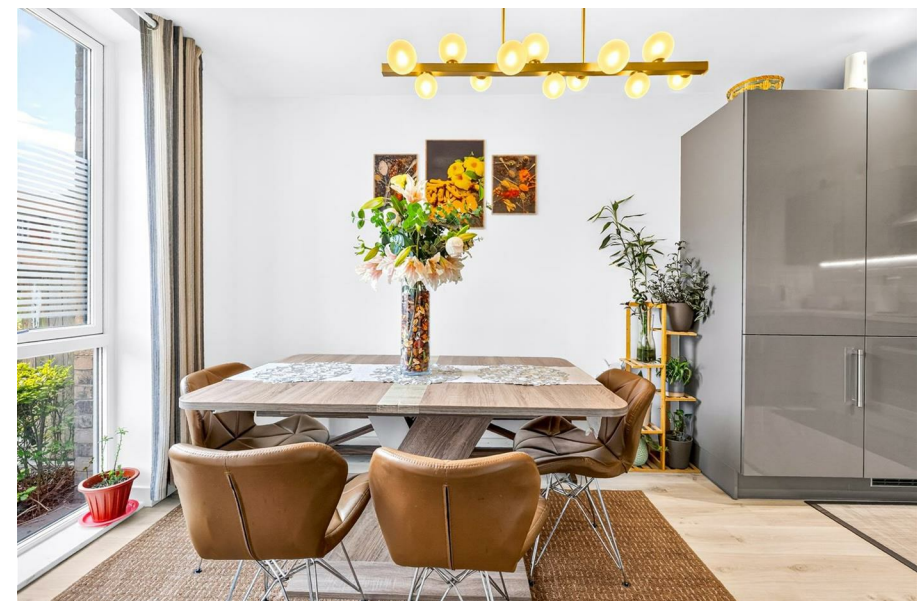
The property further benefits from onsite facilities include a communal gym, work hub and bicycle storage.

Well positioned for the amenities of Beckton, West Ham, Excel London, Newham University Hospital, King Georges and Beckton District Parks. Transport options include local bus routes, rail connections via Beckton or Upton Park stations (Rail, London Underground or DLR options) or road links via A13, A406 and M11 (to M25) motorways.



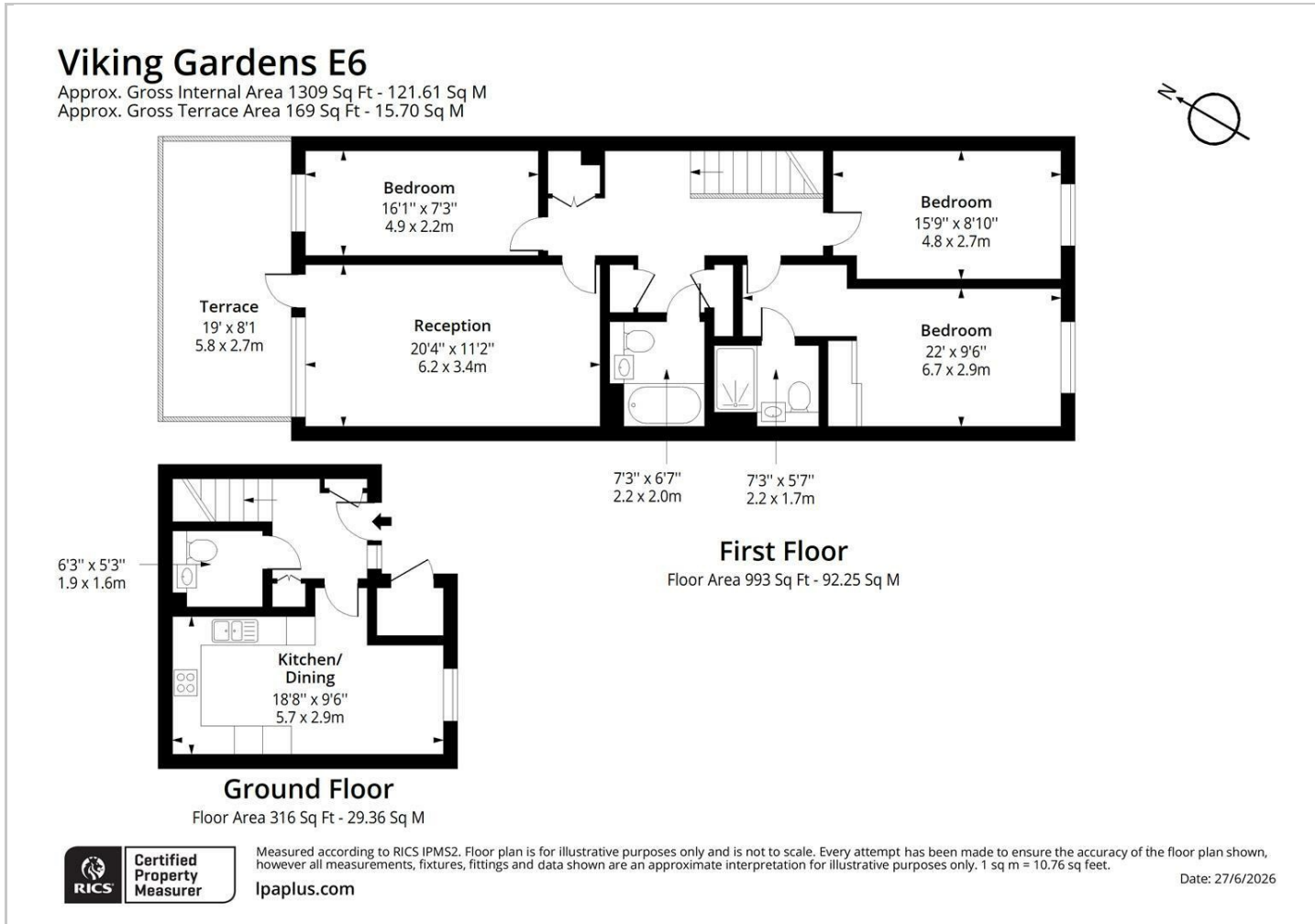


Directions

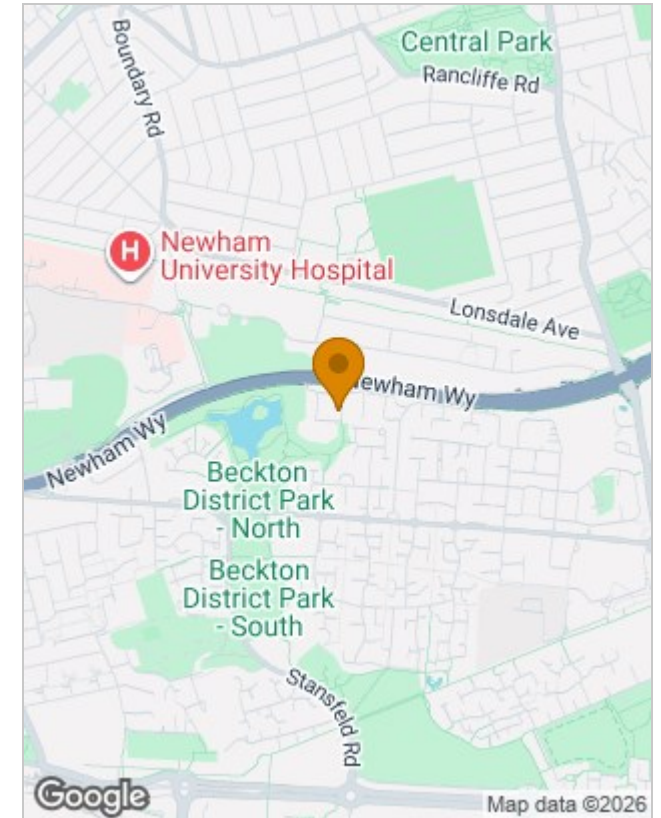




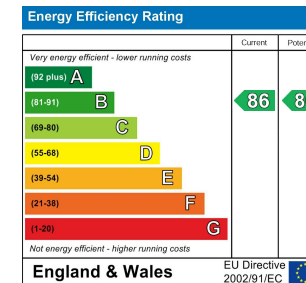
## Floor Plans



## Location Map



## Energy Performance Graph



## Viewing

Please contact our Redbridge Lettings Office on 020 8551 0211 if you wish to arrange a viewing appointment for this property or require further information.

The particulars are set out as a general outline only for the guidance of intended purchasers or lessees, and do not constitute, any part of a contract. Nothing in these particulars shall be deemed to be a statement that the property is in good structural condition or otherwise nor that any of the services, appliances, equipment or facilities are in good working order. Purchasers should satisfy themselves of this prior to purchasing.